



Products Full of Nature



Shrupaneel
Products Full of Nature

www.shrupaneel.com



Our Journey in Beekeeping

“ At Shrupaneel Environmental Services, our journey began with a vision to revolutionize beekeeping through sustainability, technology, and innovation. From supporting local beekeepers with modern techniques to ensuring the highest quality honey and beehive products, we have been committed to uplifting the beekeeping industry in India. Through R&D, smart beehives, and satellite tracking, we help beekeepers improve honey production while maintaining eco-friendly and ethical practices. Expanding from local markets to global exports, we are making Indian honey recognized worldwide while empowering beekeepers and promoting sustainable agriculture. At Shrupaneel Environmental Services, beekeeping is more than just honey—it's about preserving nature, supporting farmers, and innovating for a better future. ”





OUR SPECIALITY SES APIARY

At Shrupaneel Environmental Services (SES), we take pride in our ethical and sustainable approach to beekeeping. We own and manage our bee farms in India, ensuring pure, high-quality raw honey and a variety of natural beehive products like propolis, royal jelly, bee pollen, and bee venom.

RAW HONEY & BEEHIVE PRODUCTS Our honey and beehive products come directly from our farms, where we prioritize bee health, eco-friendly practices, and natural nectar sources to ensure purity and nutrition.

Why Choose SES Apiary?

100% Natural & Raw Honey – Unprocessed, pure, and nutrient-rich.

Wide Range of Beehive Products – Propolis, royal jelly, bee pollen, and bee venom.

Ethically Sourced – Sustainable and bee-friendly practices.

Floral Variety from India – Sourced from diverse nectar-rich regions for distinct flavors.

Global Standards – Premium quality for local and international markets





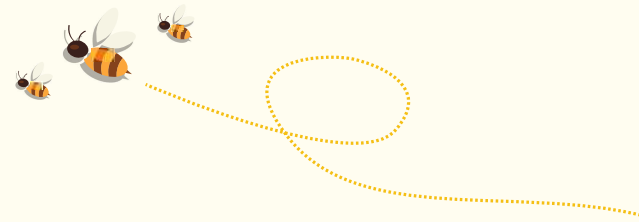
Shrupaneel Team Message

“

At Shrupaneel Honey, our team is dedicated to bringing you the finest, purest honey harvested from nature's best. With a passion for quality and sustainability, our experts work closely with local beekeepers to ensure every jar we produce is crafted with care and love. We are committed to preserving the environment, supporting local communities, and offering products that promote health and well-being. Each member of our team shares a vision of creating a sweeter, healthier world—one drop at a time. Together, we are proud to deliver honey that is as pure as our values."Let me know if you'd like any tweaks.

”





Meet Our Team



“A dedicated social worker with a Master’s in Social Work (MSW), Shruti Dhakad is passionate about community development and sustainable livelihoods. During her time at the Piramal Foundation, she worked closely with government agencies and NGOs, focusing on health and social welfare initiatives. Her extensive work with tribal communities in Chhattisgarh deepened her understanding of their challenges. Motivated to create lasting change, she founded Shrupaneel Environmental Services (SES) to support these communities through beekeeping, promoting both economic empowerment and environmental sustainability.

~ **Shruti Dhakad**

“An experienced Credit Processing Associate with three years in the finance industry, Pooja Patel started her journey at Primal Foundation, where she and Shruti Dhakad formed a close friendship while working on various social welfare projects. Their shared dedication to community development and extensive collaboration with NGOs gave them deep insights into grassroots challenges. At Shrupaneel Environmental Services (SES), Pooja plays a key role in managing financial operations, supporting strategic growth, and ensuring the organization’s financial stability.

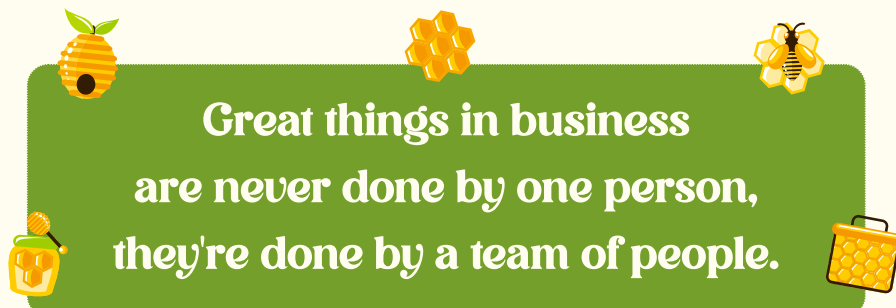
~ **Pooja Patel**

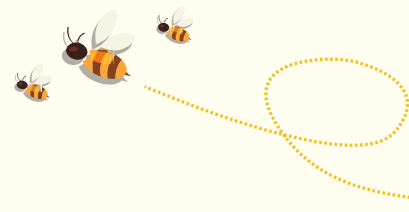


“An experienced professional in the hospitality industry with a strong background in accounting and financial management, Neelu Dhaker began her career at Adityaz Hotel, Gwalior, and later rose to the position of senior accountant at Prabha International Hotel. As the founder of Shrupaneel Environmental Services (SES), she combines her management expertise with a passion for sustainability. Neelu plays a key role in managing the company’s operations and finances while driving its expansion into international markets and developing marketing strategies to promote honey and related products globally.

~ **Neelu Dhaker**

Great things in business
are never done by one person,
they're done by a team of people.





Meet Our Team



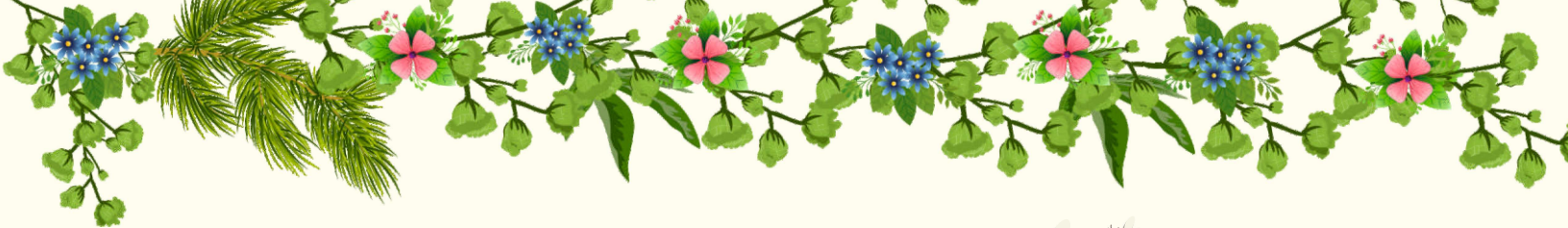
“ An IIT Bombay student and a passionate advocate of sustainable development, Toshan Kumar travels extensively across India, from Munsiyari to various regions, to learn traditional beekeeping practices and integrate them with modern innovations. He collaborates with multiple institutions to drive research and development in beekeeping, focusing on improving techniques and deploying IoT solutions to manage bee boxes. Toshan is also building technology to revolutionize beekeeping in India, aiming to connect and collaborate with beekeepers globally. Committed to bridging academic knowledge with real-world applications, he leads and mentors a team dedicated to advancing sustainable beekeeping practices.

~ Toshan Kumar

“ An engineering graduate with extensive industry experience, Pankaj Patel began his career at HPCL, where he worked on commissioning Bharat Stage-6 fuel. His growing concern for environmental issues led him to leave his engineering role and become an education consultant, training students for NTSE. He later took beekeeping training at the Central Bee Research and Training Institute, Pune, which fueled his passion for beekeeping. As a master beekeeper, Pankaj works closely with beekeepers across India, sharing his expertise and promoting sustainable practices. He now leads and mentors a dedicated team focused on advancing innovation in beekeeping and fostering environmental stewardship.

~ Pankaj Patel





Ajuwain Raw Honey

The Honey is harvested with the greatest respect for the bees and their environment. The source is Ajuwain Flower from the farms of Akola and Chittorgarh. The taste is mild and sweet, color is a strong golden, thick liquid. Ajuwain honey is 100% pure, lab-tested honey. We procure it directly from the source with no middlemen.



Beekeeper's Notes

Sourced From: Ajuwain Farms – Akola and Chittorgarh

Colour : Strong Golden

Taste: Mildly sweet with a slightly spicy note

Pollen: Medium

Pairing: Best enjoyed with warm water, herbal teas, or as a natural sweetener in health drinks

Key Health Benefits

Aids Digestion: Relieves acidity, bloating, and gas

Boosts Immunity: Helps combat infections and strengthens the immune system

Detoxifies Naturally: Removes toxins from the body and supports metabolism

Supports Respiratory Health: Alleviates cough, asthma, and other



Sustainably
Sourced



100% Natural
Honey Guarantee



Loaded with
Antioxidants



Boosts
Immunity

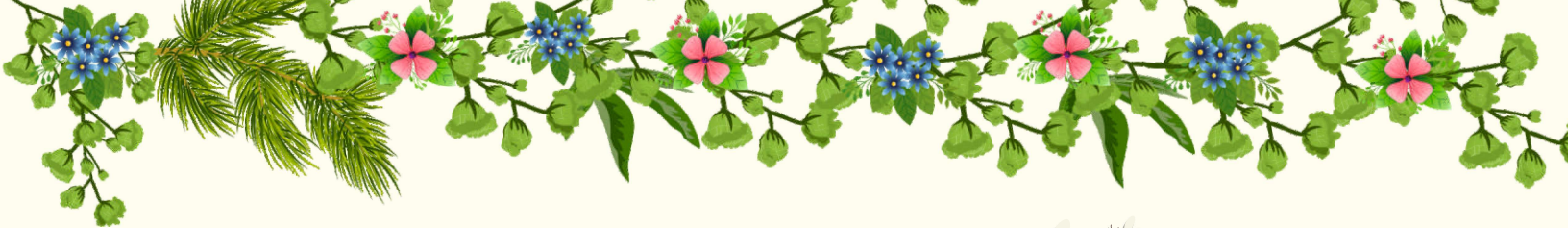


Supports
Beekeeping



No Added
Sugar





Wild Tulsi Raw Honey

Sourced from the foothills of the Himalayan mountains in Uttarakhand, Wild Tulsi Honey is pure and natural, containing organic wild forest honey and 100% natural Van Tulsi honey, free from preservatives or additives. Sustainably sourced and responsibly harvested, it supports local beekeepers while preserving the environment. On the palate, it offers a distinctive taste of fennel and dried prunes, making it a wholesome addition to your daily diet.



Beekeeper's Notes

Sourced From: Himalayan Mountains, Uttarakhand

Colour : Dark Amber

Taste: Herbal, with hints of fennel and dried prunes

Pollen: None

Pairing: Best enjoyed with teas, warm beverages, or as a topping for snacks like roasted makhanas

Key Health Benefits

Boosts Immunity: Rich in antioxidants and essential nutrients to fortify the immune system

Supports Respiratory Health: Soothes sore throats and alleviates coughs naturally

Enhances Digestion: Promotes gut health and reduces inflammation

Relieves Stress: Helps manage anxiety and promotes relaxation



Sustainably
Sourced



100% Natural
Honey Guarantee



Loaded with
Antioxidants



Boosts
Immunity

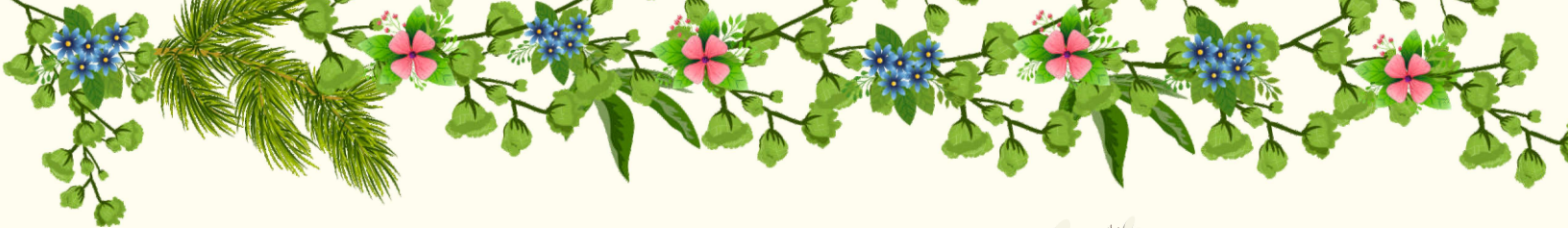


Supports
Beekeeping



No Added
Sugar





Jamun Raw Honey

Sourced from the flowers of the Jamun tree is 100% natural with a dark amber hue and a unique sharp taste balanced by treacle-like sweetness. Known for its numerous health benefits, especially for managing blood sugar levels, it is rich in vitamins and pollen. Traditionally used in Ayurveda for its medicinal properties, this honey is an ideal replacement for sugar in your daily diet. Add it to warm milk, drizzle it over your morning breakfast, or use it in rich homemade cakes.



Beekeeper's Notes

Sourced From: Jamun Tree Orchards's Madhya Pradesh, Uttar Pradesh, Uttarakhand, Jammu

Colour : Dark Amber

Taste: Sharp with sweet treacle undertones

Pollen: High

Pairing: Perfect for warm milk, breakfast foods, or as a natural sweetener in baking

Key Health Benefits

Natural Antibiotic: Known for its antibacterial and anti-inflammatory properties

Blood Sugar Support: Traditionally recommended for managing blood sugar levels

Rich in Antioxidants: Helps reduce oxidative stress and promotes overall health

Digestive Aid: Supports healthy digestion and reduces gastrointestinal inflammation



Sustainably
Sourced



100% Natural
Honey Guarantee



Loaded with
Antioxidants



Boosts
Immunity

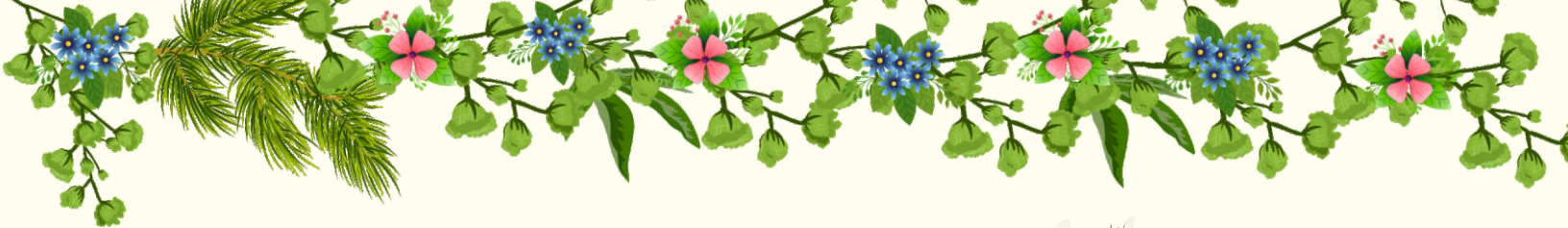


Supports
Beekeeping



No Added
Sugar





Eucalyptus Raw Honey

Sourced from beekeepers's boxes placed on eucalyptus plantations near the Himachal Pradesh and Punjab border, as well as Uttarakhand, Eucalyptus Honey is known for its distinctive medium-dark color with a slight reddish tint and a robust, herbal flavor. This honey is renowned for its medicinal value, particularly for supporting respiratory health and combating coughs and colds. It is best consumed raw, unfiltered, and unheated to retain its full potency and health benefits.



Beekeeper's Notes

Sourced From: Eucalyptus Plantations Himachal Pradesh, Punjab Border, and Uttarakhand

Colour : Medium-Dark with a Red Tinge

Taste: Robust and herbal, ranging from tart to sweet

Pollen: High

Pairing: Ideal for herbal teas, warm lemon water, or as a soothing natural remedy for coughs

Key Health Benefits

Natural Antibiotic: Possesses antibacterial and anti-inflammatory properties

Supports Respiratory Health: Relieves coughs, colds, and soothes sore throats

Rich in Antioxidants: Helps boost immunity and reduce oxidative stress

Digestive Aid: Reduces ulcers and gastrointestinal inflammation



Sustainably
Sourced



100% Natural
Honey Guarantee



Loaded with
Antioxidants



Boosts
Immunity

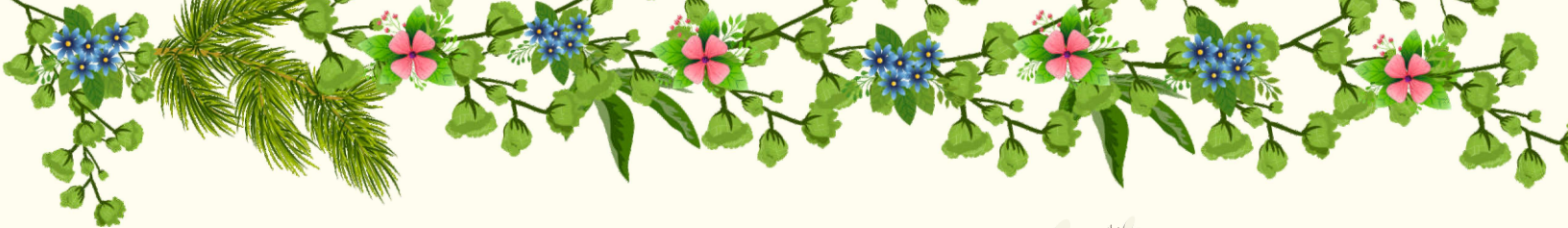


Supports
Beekeeping



No Added
Sugar





Chambal Acacia

Raw Honey

Sourced from the lush Chambal River forest range in Kota, Rajasthan, Madhya Pradesh, and Uttar Pradesh, Chambal Acacia Honey is a premium natural honey harvested from the nectar of Acacia, Kikar, and Babool flowers. With its light, mildly sweet flavor and golden color, this honey is renowned for its antiinflammatory, antibacterial, and antioxidant properties, making it a valuable addition to a healthy lifestyle.



Beekeeper's Notes

Sourced From: Chambal River Forest Range – Kota, Rajasthan, Madhya

Colour: Light Golden

Taste: Mildly sweet with subtle floral notes

Pollen: Low

Pairing: Ideal as a natural sweetener for warm beverages, drizzled over

Key Health Benefits

Anti-Inflammatory & Antibacterial: Supports wound healing and reduces inflammation

Rich in Antioxidants: Boosts immunity and promotes overall well-being

Improves Digestion: Helps prevent acid reflux and supports gut health

Supports Skin & Hair Health: Nourishes skin and promotes healthy hair



Sustainably
Sourced



100% Natural
Honey Guarantee



Loaded with
Antioxidants



Boosts
Immunity

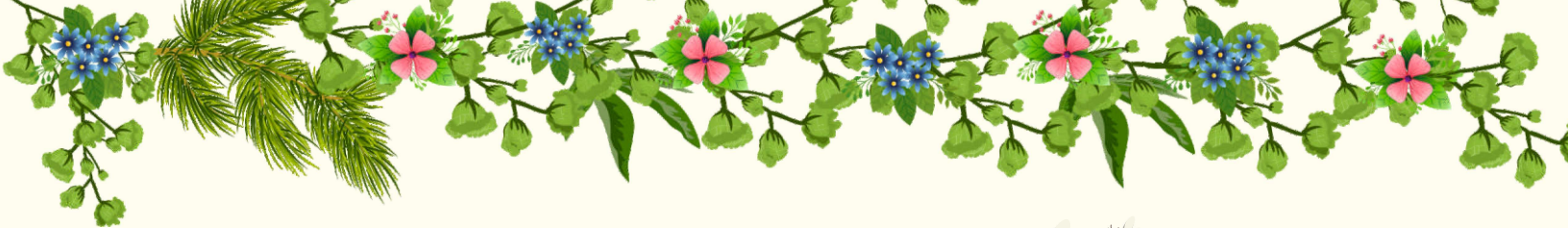


Supports
Beekeeping



No Added
Sugar





Mustard Raw Honey

Sourced from the winter blooms of mustard farms in Kota, Rajasthan, Madhya Pradesh, and Uttar Pradesh, Crystallized Mustard Honey is harvested during the fleeting months of December and January. Known for its creamy white color and thick consistency, this honey naturally crystallizes at room temperature, highlighting its raw and pure nature. Crystallization is a sign of authenticity, proving it remains unprocessed and full of natural goodness.



Beekeeper's Notes

Sourced From: Mustard Farms – Kota, Rajasthan, Madhya Pradesh, Uttar Pradesh

Colour : Creamy White

Taste: Mild and earthy with a rich texture

Consistency: Thick, Crystallized or Semi-Crystallized

Pollen: High

Pairing: Perfect for spreading on toast, adding to warm drinks, or using as a natural sweetener in desserts.

Key Health Benefits

Boosts Immunity: Packed with natural antioxidants and essential nutrients

Anti-Inflammatory & Antiseptic: Helps heal wounds and reduce inflammation

Supports Bone Health: Rich in calcium, manganese, and omega-3 fatty acids

Migraine Relief: Known to help reduce the frequency of migraine attacks



Sustainably
Sourced



100% Natural
Honey Guarantee



Loaded with
Antioxidants



Boosts
Immunity

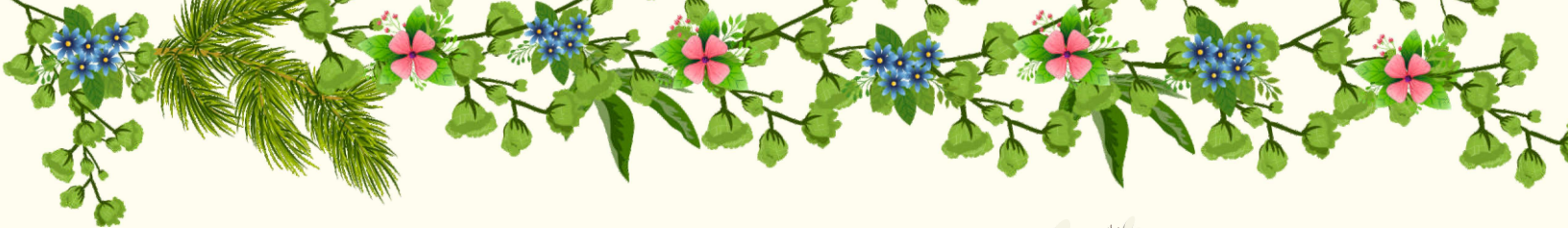


Supports
Beekeeping



No Added
Sugar





Coriander Raw Honey

Sourced from the lands of Asiatic Lions, Coriander Honey is golden-amber in color with a mild spicy and citrusy taste. Harvested from the nectar of coriander flowers, this honey is a rare find due to its dependence on specific weather conditions. Known for its therapeutic benefits, it's a wholesome addition to your daily diet, supporting digestion and overall wellness.



Beekeeper's Notes

Sourced From: Coriander Fields – Gujarat, Madhya Pradesh, and Rajasthan

Colour : Golden Amber

Taste: Mildly spicy with a hint of citrus

Consistency: Thick, Crystallized or Semi-Crystallized

Pollen: Low

Pairing: Ideal for warm teas, salad dressings, or as a natural sweetener in savory dishes

Key Health Benefits

Aids Digestion: Relieves indigestion and improves gut health

Supports Healthy Blood Circulation: Promotes cardiovascular wellness

Boosts Metabolism: Helps in weight management and detoxification

Reduces Menstrual Cramps: Supports hormonal balance and relieves



Sustainably
Sourced



100% Natural
Honey Guarantee



Loaded with
Antioxidants



Boosts
Immunity



Supports
Beekeeping



No Added
Sugar





Litchi Raw Honey

Sourced from the lush lychee orchards of Bihar and Uttarakhand, Lychee Honey is light amber in color with a melt-in-the-mouth, fruity flavor. Known for its light and creamy taste, it's a favorite among kids and adults alike. This 100% raw honey is collected in small batches soon after the lychee blossoms bloom, ensuring its premium quality and rich flavor. Perfect for spreading on toast, sweetening light tea, or drizzling over desserts, it's a delightful addition to your diet.



Beekeeper's Notes

Sourced From: Lychee Orchards – Bihar and Uttarakhand

Colour : Light Amber

Taste: Buttery with a fruity, floral note

Consistency: Thick, Crystallized or Semi-Crystallized

Pollen: Medium

Pairing: Great with buttered toast, light tea, breakfast cereals, and desserts

Key Health Benefits

Cell Repair & Wound Healing: Rich in vitamins and minerals that promote tissue regeneration

Cough and Cold Relief: Soothes sore throats and provides relief from respiratory issues

Great for Skin & Hair: Nourishes skin and supports healthy hair growth

Supports Bone Health: Beneficial for women and children in maintaining



Sustainably
Sourced



100% Natural
Honey Guarantee



Loaded with
Antioxidants



Boosts
Immunity

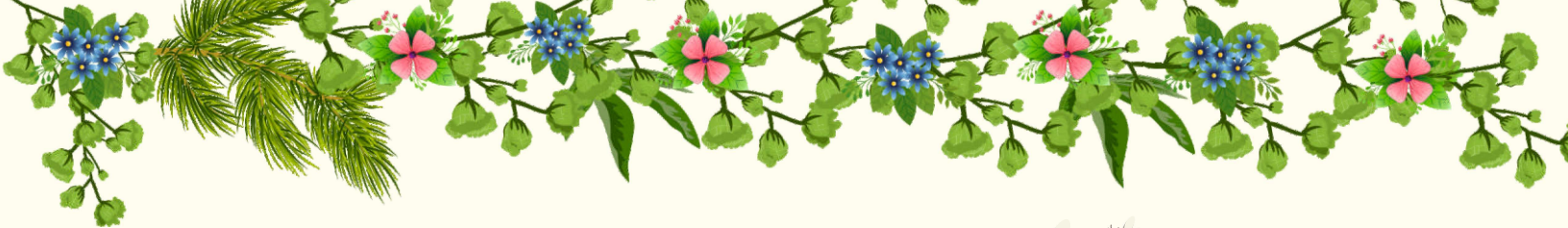


Supports
Beekeeping



No Added
Sugar





Multiflora Raw Honey

Sourced from diverse floral landscapes, Multiflora Honey is a unique blend of nectar collected from various flowers found in forests, agricultural fields, and horticultural areas. This natural honey varies in color from light amber to dark brown, depending on the predominant flora, and offers a complex flavor profile with subtle floral undertones. Known for its versatility and rich nutritional value, it's a favorite among honey enthusiasts and culinary experts alike.



Beekeeper's Notes

Sourced From: Forests and Horticultural Fields of Uttar Pradesh and Uttarakhand

Colour : Ranges from Light Amber to Dark Brown

Taste: Complex and well-balanced with floral undertones

Pollen: High

Pairing: Perfect for yogurt, toast, marinades, dressings, and smoothies

Key Health Benefits

Supports Heart Health: Helps lower the risk of heart disease

Boosts Immunity: Strengthens the immune system with natural antioxidants

Respiratory Relief: Aids in the treatment of coughs, colds, and respiratory issues

Promotes Skin & Hair Health: Nourishes the skin and supports healthy hair



Sustainably
Sourced



100% Natural
Honey Guarantee



Loaded with
Antioxidants



Boosts
Immunity



Supports
Beekeeping



No Added
Sugar



Gift Boxes



★ SESHONEY Premium Honey Gift Box

Our Premium Honey Gift Box is crafted for those who value purity and aesthetics. Each box contains a selection of raw, unprocessed honeys harvested from our own scientifically managed apiaries.

Perfect for festive celebrations, wedding gifts, employee appreciation, and high-value corporate gifting.

Highlights:

- 100% Raw & Unheated Honey
- Elegant and eco-friendly packaging
- Multiple flavour options (Ajwain, Jamun, Sidr, Multifloral, etc.)
- Custom branding available for bulk orders
- Ideal for personal and corporate occasions



FROM OUR BEEHIVES TO YOUR TABLE

A celebration of nature's
artistry and the
beekeeper's craft.

At Shrupaneel, we believe that honey should tell a story — of pure blossoms, thriving bees, and mindful hands that care. Each jar is collected with care, bottled with honesty, and delivered with love.

Our honey is 100% natural, raw, and unprocessed, sourced directly from our own Shrupaneel Bee Farms. We practice sustainable and scientific beekeeping, ensuring every colony flourishes while protecting biodiversity.



Introducing the Mono-Floral Raw Honey Gift Pack

A thoughtfully curated collection of three distinct floral honeys — each with its own aroma, taste, and health benefits. Perfect as a wellness gift or a natural indulgence.



	Tulsi Honey	Ajwain Honey	Jamun Honey
Sourced From:	Himalayan Mountains, Uttarakhand	Ajwain Farms – Akola and Chittorgarh	Jamun Tree Orchards – Madhya Pradesh, Uttar Pradesh, Uttarakhand & Jammu
Colour:	Dark Amber	Strong Golden	Dark Amber
Taste:	Herbal, with hints of fennel and dried prunes	Mildly sweet with a slightly spicy note	Sharp with sweet treacle undertones
Pollen:	None	Medium	High
Pairing:	Best with teas, warm beverages, or as a topping for roasted snacks like makhanas	Ideal with warm water, herbal teas, or as a natural sweetener in health drinks	Perfect for warm milk, breakfast foods, or baking recipes

Each honey is free from added sugar, artificial colors, and preservatives — just nature's true sweetness.

Crafted by Beekeepers. Inspired by Nature.

🌐 www.shrupaneel.com 📞 +91 79872 24468



Happy Customers

IIT Event



"This honey is so fresh,
I can really taste the difference."



"I'm a repeat customer,
this honey is always reliable and delicious."



"I just love it from taste and health
Tulsi Honey."





Bee Smart! Know Your Honey



Can you cook honey?

No! Cooking honey is not recommended. Heating honey above 40°C (104°F) destroys its natural enzymes, antioxidants, and nutrients. When exposed to high temperatures, honey undergoes a chemical change, which can alter its structure and may even lead to the formation of harmful compounds.

How should you use honey safely?

- Use honey in warm (not hot) water to retain its natural goodness.
- Avoid baking or cooking with honey at high temperatures.
- Choose raw, unfiltered honey that hasn't been heat-processed to preserve its original properties

Can Honey Help with Weight Management?

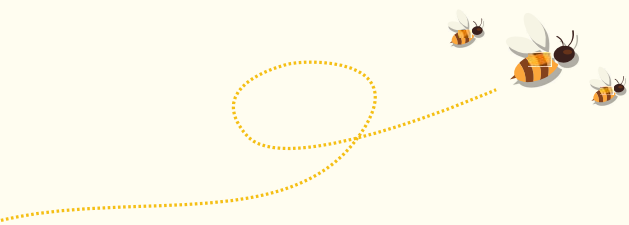
Yes, but it depends on how you consume it!

Honey in warm water boosts metabolism, aids digestion, and helps break down fat, making it great for weight loss. Adding lemon enhances detoxification.

Honey in cold water slows digestion and increases nutrient absorption, which may lead to weight gain over time.

The difference lies in how enzymes react—warm water activates digestion, while cold water promotes calorie retention.





Why Does My Honey Have White Foam on Top?

White foam on honey is a natural sign of its authenticity and purity. It forms due to air bubbles trapped during bottling, indicating that the honey was not heat-processed, thus preserving its natural enzymes and nutrients. This foam often contains valuable elements like pollen, propolis, and beeswax, which enhance the honey's quality and benefits. Rest assured, the foam is completely safe to consume and a hallmark of raw, unfiltered honey.

Why Does Honey Crystallize?

Crystallization is a natural process that indicates pure, raw honey. It occurs when the natural sugars in honey, like glucose, start to form crystals, changing its texture from liquid to semi-solid. This does not mean the honey is spoiled or impure—rather, it confirms that the honey is unprocessed and unadulterated. If you prefer it in liquid form, simply place the jar in warm water to dissolve the crystals while preserving its natural taste and nutrients.





Raw Honey

Vs.

Processed Honey

Extracted directly from the beehive, raw honey is unprocessed and unpasteurized, retaining its natural enzymes, nutrients, and beneficial compounds.

Minimal processing: Typically involves simple straining to remove large particles, preserving natural components like pollen, propolis, and beeswax.

Varied appearance: Can be cloudy or opaque due to the presence of pollen and other natural substances. Flavor varies depending on the floral source, offering a rich and robust taste.

Naturally crystallizes over time, forming a granulated texture. This is a natural process and indicates purity; crystallized honey can be returned to liquid form by gently warming.

Long shelf life: Can remain stable for years if stored properly. Crystallization may occur but does not indicate spoilage.

Rich in pollen: Contains natural pollen, which contributes to its nutritional and potential health benefits, including antioxidant properties.

Undergoes pasteurization (heating) and filtration to improve appearance and shelf life, which may remove beneficial nutrients and antioxidants.

Extensive processing: Involves heating to high temperatures and fine filtration, which can destroy enzymes and remove beneficial compounds.

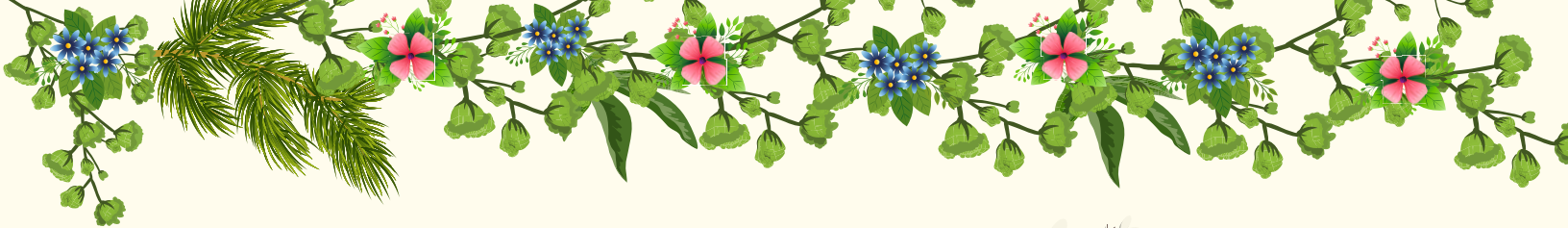
Uniform appearance: Typically clear and smooth due to filtration and pasteurization. Flavor is more consistent but may lack the depth found in raw honey.

Less prone to crystallization due to the removal of particles and pollen during processing. However, if crystallization occurs, it can be reversed similarly by warming.

Extended shelf life: Processing methods like pasteurization help prevent fermentation and delay crystallization, keeping the honey in liquid form longer.

Reduced pollen content: Filtration processes remove most pollen, potentially diminishing some health benefits associated with raw honey.





We are on NEWS

Global Investors Summit – 2025



Honey Startup
In MP, 10 Flavors,
Supplied In Mumbai

एक महीने में 250 किलों शहद का उत्पादन: तुलसी, अजवायन, सरसों
समेत 10 फ्लेवर में तैयार होता है प्रीमियम क्वालिटी का शहद

ईश्वर सिंह परमार। भोपाल 10 दिन पहले



<https://www.youtube.com/watch?v=WAFkfVSJGTo>
<https://zurl.co/umpW8>





Certification



सूक्ष्म, लघु एवं मध्यम उद्यम
MICRO, SMALL & MEDIUM ENTERPRISES



कामधे दुःखनाशनाम्।
प्राणिनाम् उत्थानाशनम्॥





www.shrupaneel.com

SHRUPANEEL ENVIRONMENT SERVICES LLP

Contact No. +91 79872 24468

fssai Lic No. 21424570000505

Branch Office

901, L-32, Swapnapoorti Sector-36,
Kharghar, Navi Mumbai-410210

Corporate Office

Plot No B-81, Ramayan South
Avenue Phase-1, Ward No 85, Katara
hills Bhopal, MP PIN-462043

Registered Office

205 sector2A 474012 vinay nagar,
Gwalior, Madhya Pradesh, 474008

